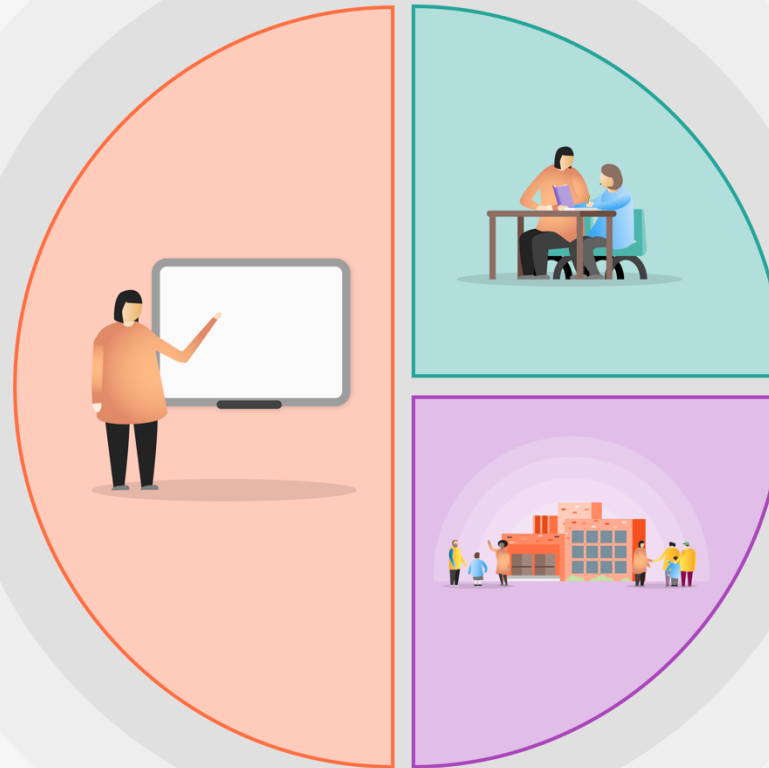


1 Teaching

- A broad & balanced curriculum with traditional academic GCSE offer for the majority (Ebacc)
- High quality professional development of staff (externally evaluated by TDT - Silver Award) and use of 'subject instructional coaching'.
- 'Inclusive Teaching' CPD programme ensures adaptive teaching of high-quality curriculum
- Quality first teaching based on Great Teaching Toolkit (Evidence Based Education): High Quality Curriculum, Supportive Environment, Opportunity to Learn and Hard Thinking).
- Access to specialist teacher training via affiliation with Research School
- Development of disciplinary literacy approaches in the classroom
- Implementation of EEF's 'SEND 5 A DAY' strategy ensures accessible curriculum for all
- Boosting capacity of Maths and English Teaching
- Intelligent grouping in core subjects
- Monitoring of student progress through data tracking to inform responsive teaching
- Developing cultural capital through curriculum, enrichment and careers opportunities
- Provision of revision materials
- Access to technology to support QFT



2 Targeted academic support

- Funding of Progress Tutor Team to deliver catch up small group and 1:1 interventions in English and Maths
- SEND small group and 1:1 interventions, including 'Provision Room' access.
- FFT Reading Quest and bespoke reading intervention
- Diagnostic testing to identify specific student barriers and interventions to address their individual needs.

3 Wider strategies

- Dedicated AHT as Champion for Pupil Premium
- Designated Attendance Officer and participation in Norwich Opportunity Area Attendance Project
- Pastoral and well-being support
- Peripatetic music lessons to improve Cultural Capital
- Financial support for trips and extra-curricular activities
- Access to SEMH Practitioner
- Access to Independent Careers Advisor and Careers Coaching
- 'Inspire Through Music' Intervention
- Norfolk Steps/Trauma Informed approach to behaviour for learning strategies