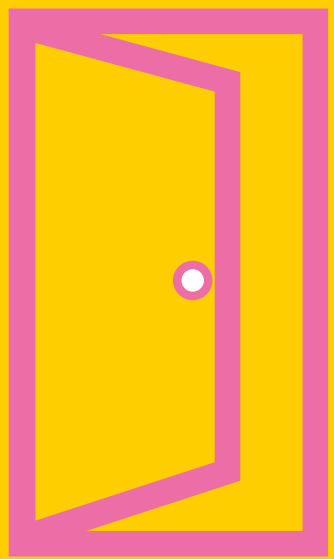




Prospectus 2024-25





**Located in the heart
of Norwich city centre,
Notre Dame Sixth Form
offers a wide range of
courses to help prepare
you for the next steps
in your life.**

WELCOME



Welcome to Notre Dame Sixth Form

Friendly and inclusive, our Sixth Form is here to help broaden your horizons and challenge your mind. Our high standards of teaching provide you with the best education possible, and extracurricular activities help you meet new people and consider new things.

So, if you want a friendly and diverse environment full of exciting experiences to help support your future, then Notre Dame is the place for you.

I look forward to welcoming you to our caring community.

Tom Pinnington
Head of School

“ Our school is full of support, high standards of teaching and a wealth of extracurricular activities for you to enjoy and be inspired by. ”



Why choose

Notre Dame?

We are a welcoming and engaging Sixth Form – our teachers care about meeting your individual needs.

As well as the traditional subjects such as Maths, English and Science, we have a wide range of courses available to inspire academic growth and to challenge your skills: from Drama, Product Design and Art for the creatives out there, to Politics and Philosophy & Ethics for big thinkers. We've made sure the Sixth Form is full of support to help you meet the challenges of A Levels.

Our Sixth Form pastoral team and SEMH professional are available to ease any pressure or worries and help make sure your time at Notre Dame is a happy one.

Our aim is to help you fulfil your potential and to make sure you have all the support you need.



Exciting opportunities and inspiring activities



As well as getting a high-level education, we want everyone to enjoy their time at Notre Dame.

Instigating or engaging in enrichment activities is a great way to meet new people, build your CV and get the very best from Sixth Form life.

We encourage and promote an atmosphere of student-led initiatives and clubs at Sixth Form. Over the years students have assembled and run a variety of clubs including question time with local politicians as guests, debate clubs, a mooted society, a student magazine and, more recently, 'Libertas', a group of Y12 students who arrange talks by external speakers to provide information for Sixth Formers about careers in economics, finance, business and law.

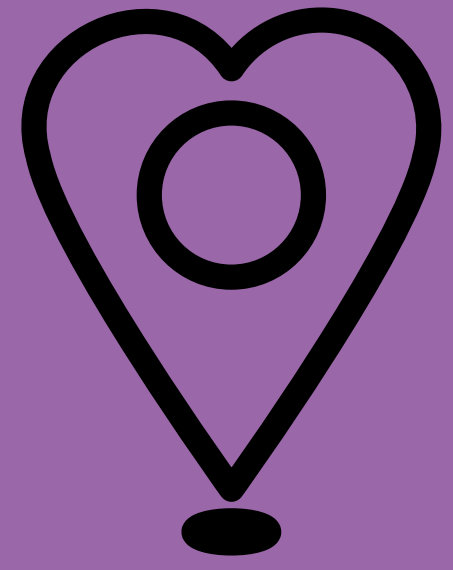


Every week we set aside one hour of your timetable for Pathways. This is designed to bridge the gap between GCSE and A Level and prepare you for your future, giving you the opportunity to extend your experiences beyond the classroom by exploring a range of relevant topics and helping you to develop your organisational, study and employability skills. We regularly invite local professionals into the school to help you understand the jobs market and to share their work experiences. Pathways will also allow you to participate in a choice of activities, or take on responsibilities, that encourage you to give back to the wider school community.

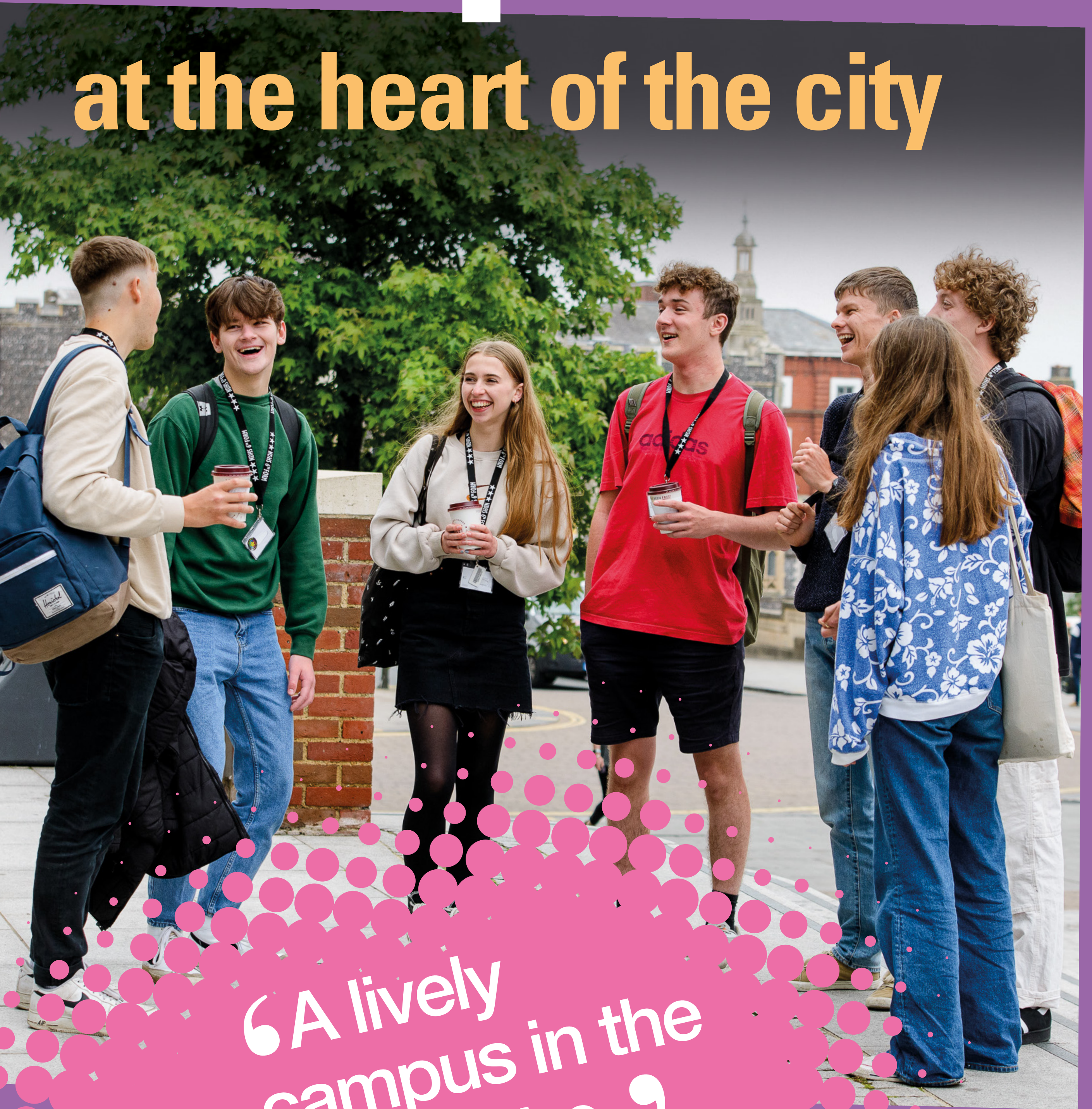
Also timetabled weekly is Culture and Faith Studies (CFS). Designed to explore important spiritual, moral and cultural aspects of the human experience, it provides a safe and open forum where you can be passionate, confident and articulate in sharing beliefs, values and opinions. It enables the sharing of wider worldviews through listening and learning from others, and engenders a deep respect of diversity: something that is increasingly important to us all.



Your campus



at the heart of the city



“A lively campus in the city centre.”



Notre Dame is an exciting, vibrant campus, nestled in the centre of Norwich. Surrounded by an unsurpassed breadth of heritage buildings, two stunning cathedrals, international galleries and popular theatres, Norwich is a historic city that's alive with culture and entertainment possibilities.

You'll find everything the city centre has to offer within easy walking distance, including the Millennium Library at The Forum for in-depth research; a number of local restaurants should you want to pop out for lunch; and an award-winning breadth of shopping options just around the corner. And you don't need to worry about how to get here; we're conveniently located on the same road as Norwich City Bus Station, and the train station is only a 15-minute walk away.

Having a city-centre campus is a real plus and adds to your student experience.



“Sixth Form has allowed me to blossom in my academic abilities and to flourish as an individual.”

Maddie Nunn

Reading English Literature at the UEA



The Sixth Form experience

The school day begins with registration at 8.50am. The rest of your day will be divided into six timetabled periods which rotate every fortnight, with a morning and lunchtime break (most days will have private study slots between lessons, some of which are supervised). With the city on your doorstep, you're free to pop out to study, have meetings or grab lunch when you are not in class. While on campus, there's a range of social and study spaces and facilities for you to use, too.

Centre6 common room

This relaxed social space has free WiFi and is the perfect place to get comfortable, catch up with friends or meet to tackle group projects.

Learning facilities

The Sixth Form Library is open five days a week. It is a quiet study area with dozens of workstations and computers, specifically for Sixth Form students. Our canteen area and a number of spaces located throughout the school are perfect for group study.

Sports

If you want to stay fit and healthy, we have all-weather tennis courts, a gym, basketball courts and school teams for you to get involved in. Everyone's timetable has a slot of optional PE.

Catering

If you're staying on campus for lunch, you have a choice of food outlets and refreshment facilities across the campus.



Subject blocks

Tap any subject below to find out more.

★★★ Option Block A	★★★ Option Block B	★★★ Option Block C	★★★ Option Block D
Economics	Biology	Chemistry	Drama
English Lang & Lit	Business	Economics	French
English Lit	Core Maths	English Lit	PE
Geography	Spanish	English Lang & Lit	Physics
Chemistry	History	Maths	Art
History	Politics	Philosophy & Ethics (RS)	Psychology
Maths	Sociology	Psychology	Business
Music	Further Maths	Sociology	Biology
Politics		Geography	
Psychology		Computer Science	
Fashion & Textiles			
Physics			
Product Design			

From quiet study areas to laid-back common rooms, there's always a place for you at Notre Dame.



Should I study 3 or 4 A Levels at Notre Dame Sixth Form?

Many students ask this question and our advice is that you should take 3, if you are **absolutely** certain about your subject choices; the vast majority of our students, at the end of year 13, are studying 3 subjects.

If you are taking 'new' subjects, however, things that you have not studied at GCSE e.g. Sociology, Politics, Philosophy, etc... sometimes it is a good idea to start on 4 subjects, so that you get a firm idea of the course and drop down to 3 subjects in the first half-term; many of our students select this route.

Experience has also shown us that students studying Maths and Science packages are well advised to start their A Level life on 4 subjects; again, students are able to drop down to 3 A Levels within the first half-term when they are settled in their course.



“ My teachers
supported me through
the hardest two years of
school I’ve experienced,
helped me to love every
second and to always
get the most out of it.”

Ella Aldous

Reading Law at Lancaster University

If you would like to talk to us about
a pathway or a specific option, please
tap the button below to get in touch.

Enrol in Notre Dame Sixth Form and
be inspired for your future.

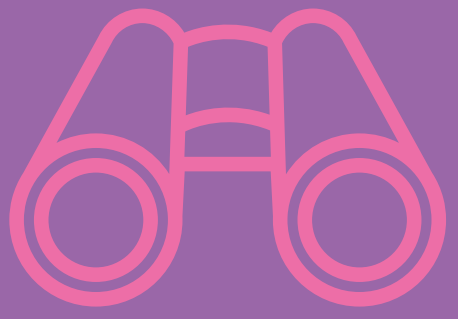
Contact us

sixthform@ndhs.org.uk

www.ndhs.org.uk



Helping you



prepare for the future

Here at Notre Dame, we have a dedicated Careers Education, Information & Guidance (CEIAG) team who'll work closely with you to make sure you're ready for your future. Whether you're applying for apprenticeships or university, diving into employment or considering a gap year, they can help you get organised and prepared.

If you are considering Oxbridge, Medicine, USA or Russell Group universities, we also have the Renaissance Project, where specialist support helps you throughout the application and selection process. This is run by dedicated staff and we also invite many successful NDHS alumni to share their experiences, offer support and inspire.

In addition, we offer the Extended Project Qualification (EPQ), a 5,000-plus-word independent research assignment that is offered to Year 12 students on target with their core study. This gives you an additional qualification and is one of the ways to show employers and universities you have the personal and organisational skills that they are looking for.



99%

of students have gone
into higher education
or employment





WORLD
LAND
TRUST™

www.carbonbalancedpaper.com
CBP013811



www.ndhs.org.uk